



Wall System

Interlock Mounting Installation

Thank You!

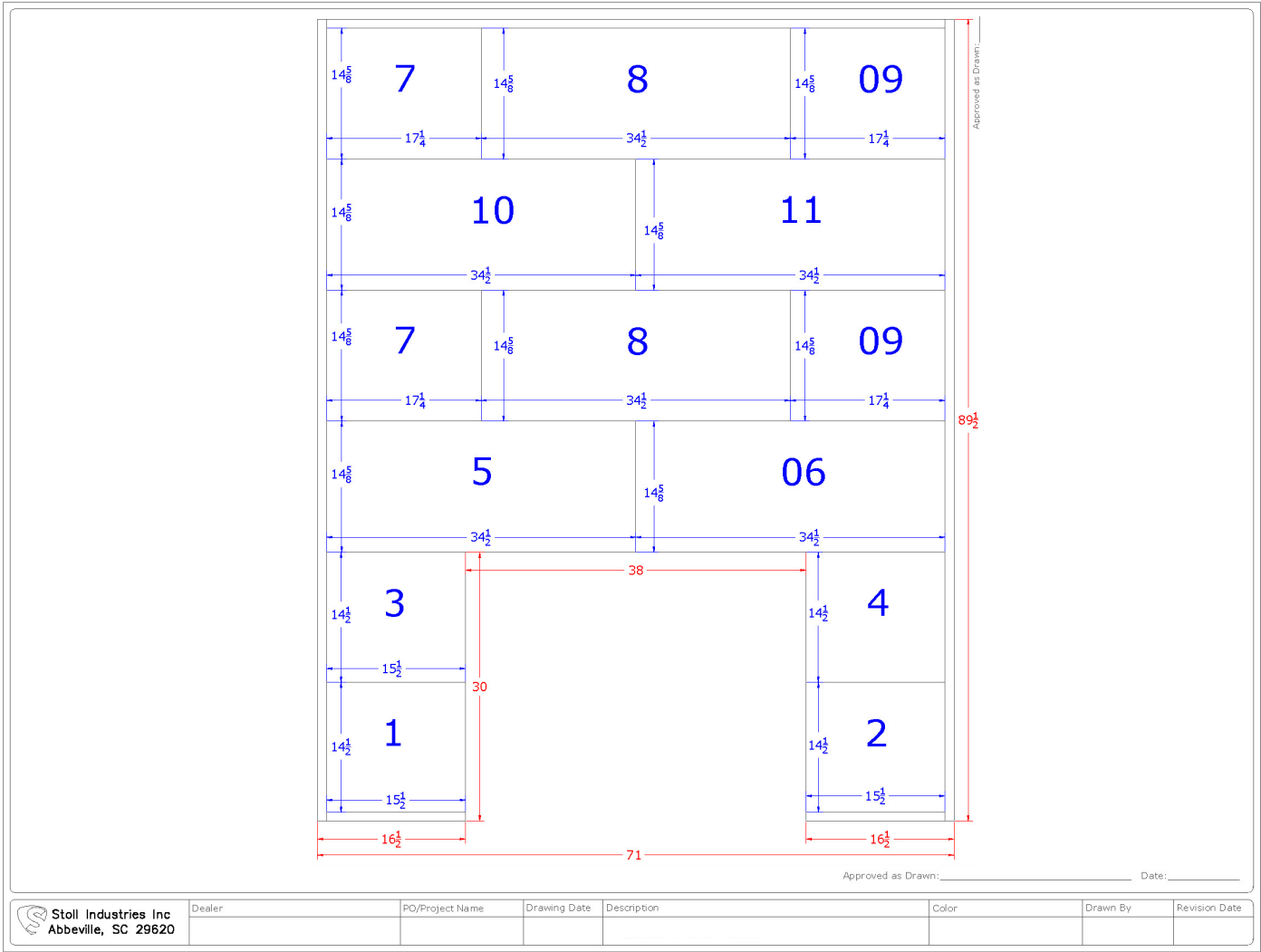
Thank you for purchasing a Stoll Wall System! We are confident this quality product will last you for years to come. If you need further help or additional information regarding installation, please reach out to your local dealer for assistance.

Support for Shelves/TV's

5/8" deep Wood Blocking needs to be installed behind the panels where shelves, mantles, or tv brackets will be installed. It may also be added where needed on larger panel spans.

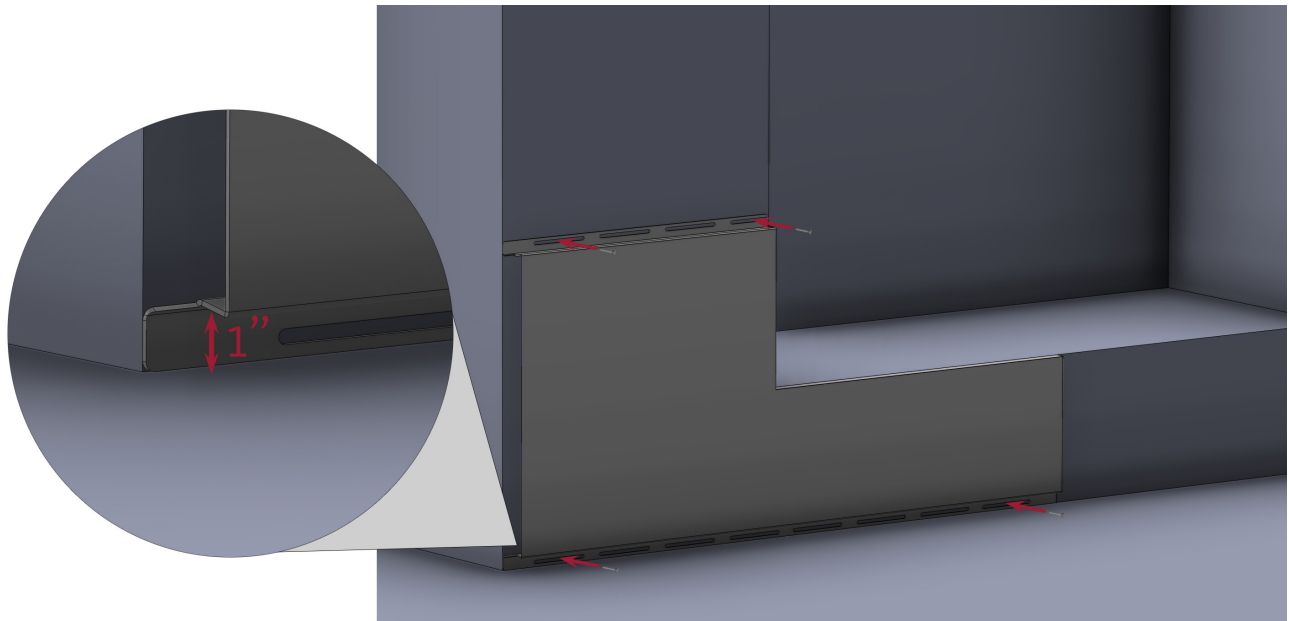
Understanding the CAD drawing

Each Wall will include a CAD drawing. The sketch will show the panel layout as well as number the panels for their intended location. Labels on the sketch will correspond to labels attached to each trim piece and numbers that are laser cut into the panel flange.

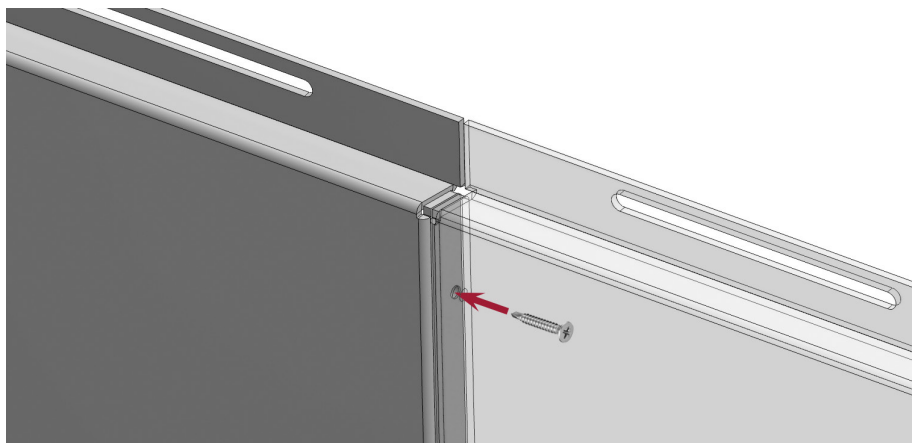


Panel Installation

1. Refer to the number sheet for exact locations of each numbered panel.
2. Install the bottom row of panels with a 1" gap between the bottom panel lip and the floor. It is very important to ensure that the bottom panels remain perfectly leveled during installation. *(Tip: Place a 1" Spacer underneath the bottom panels for the perfect gap)*
3. Using the appropriate screws/fasteners, secure the panels to the wall studs/mounting surface through the recessed flange at the top and bottom of the panel. *(Only the bottom row of panels will have mounting flanges on both the top and bottom of each panel)*

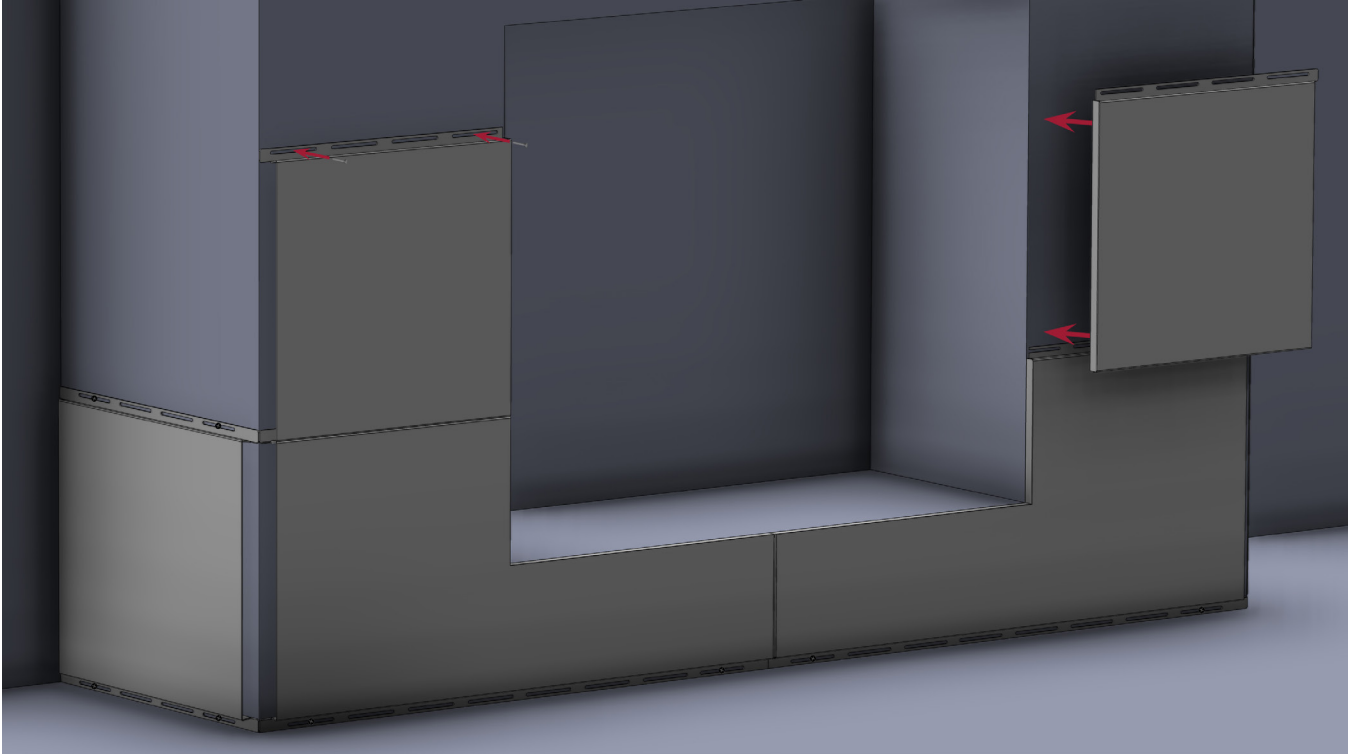


4. Panels with vertical seams may need to be fastened together when installing above the fireplace opening, areas without supporting panels below, or if additional rigidity is needed. Fasten the panels together with self-tapping screws through the pre-drilled holes in the inside returns of the vertical seams.

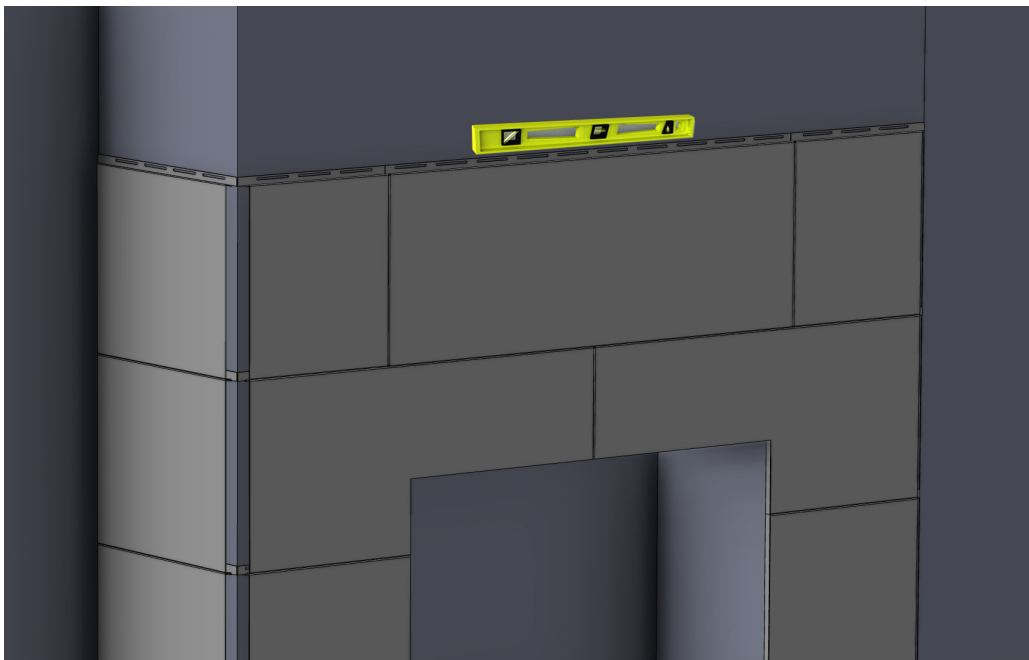


Panel Installation continued

5. Install the following rows of panels, each panel covering the mounting flange of the panels below.
6. Repeat these steps for each row, until all panels are installed.

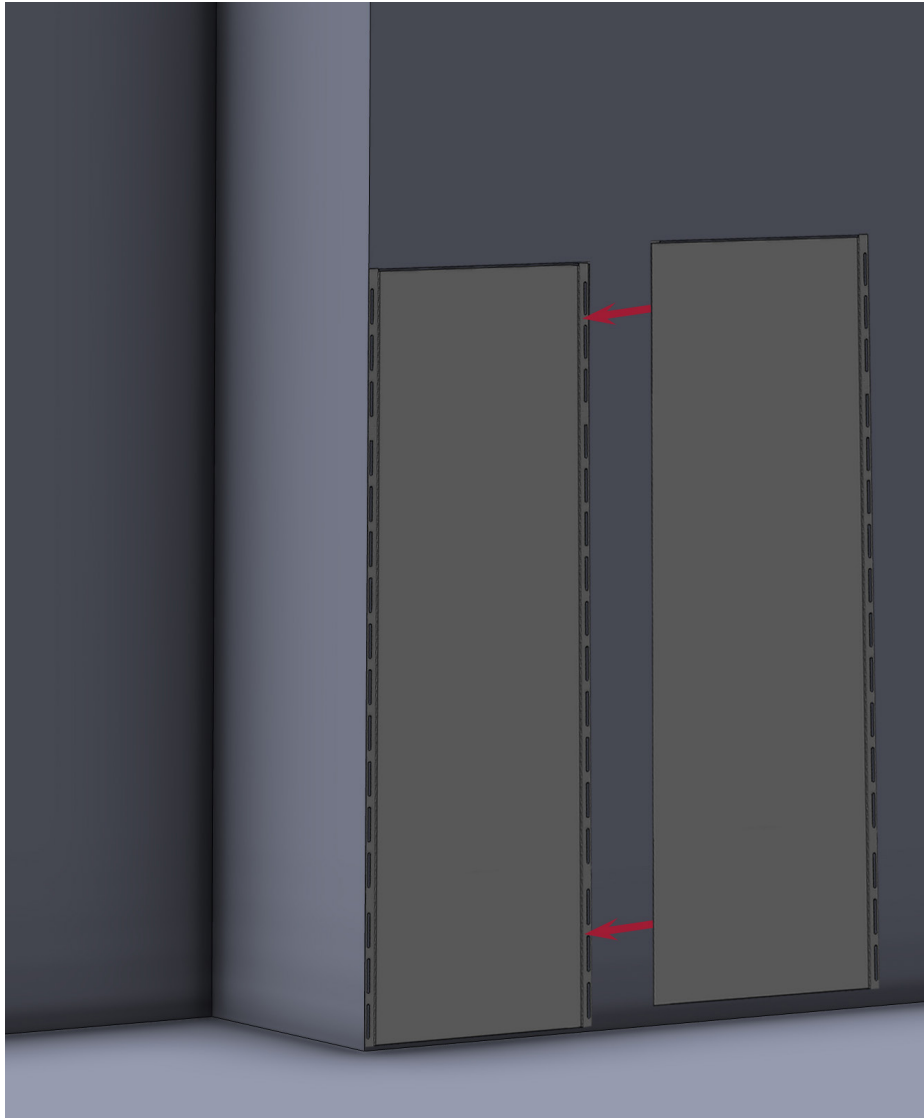


Note: Verify Panels remain level throughout the installation process.



Panel Installation continued

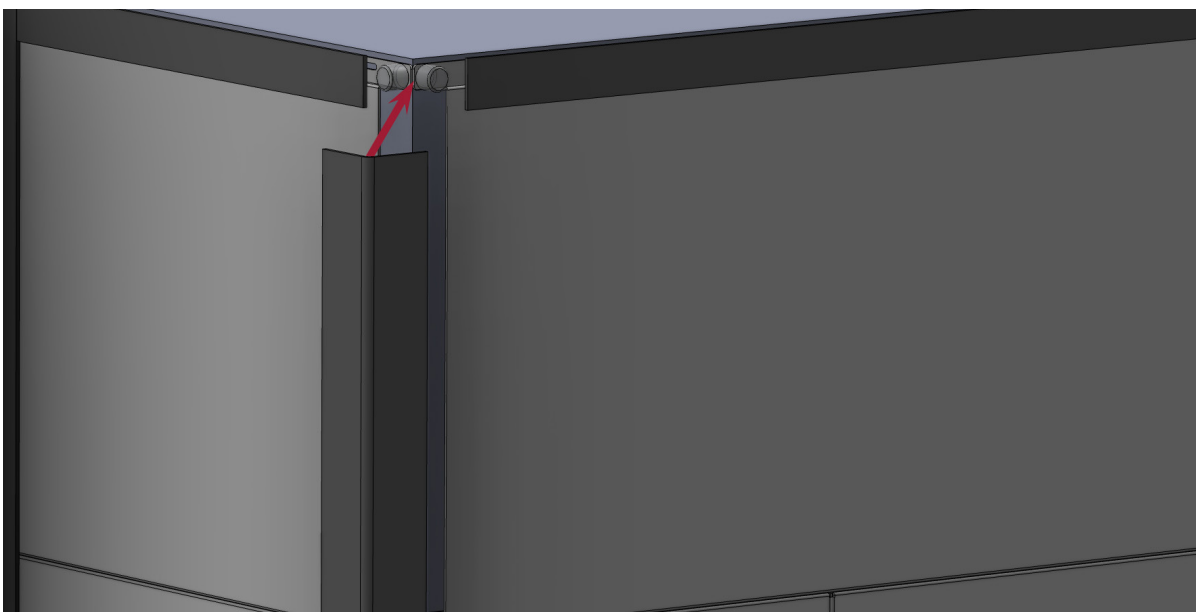
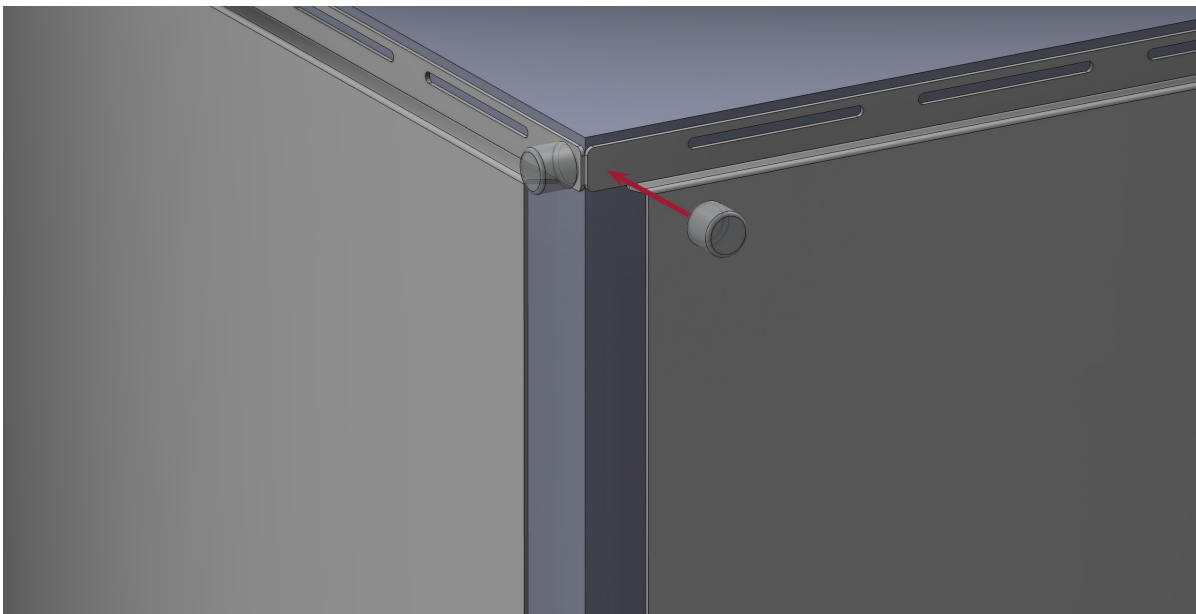
Note: If you have vertical panels, follow the same process but beginning on the vertical edge of the wall instead of the horizontal bottom.



Trim Installation

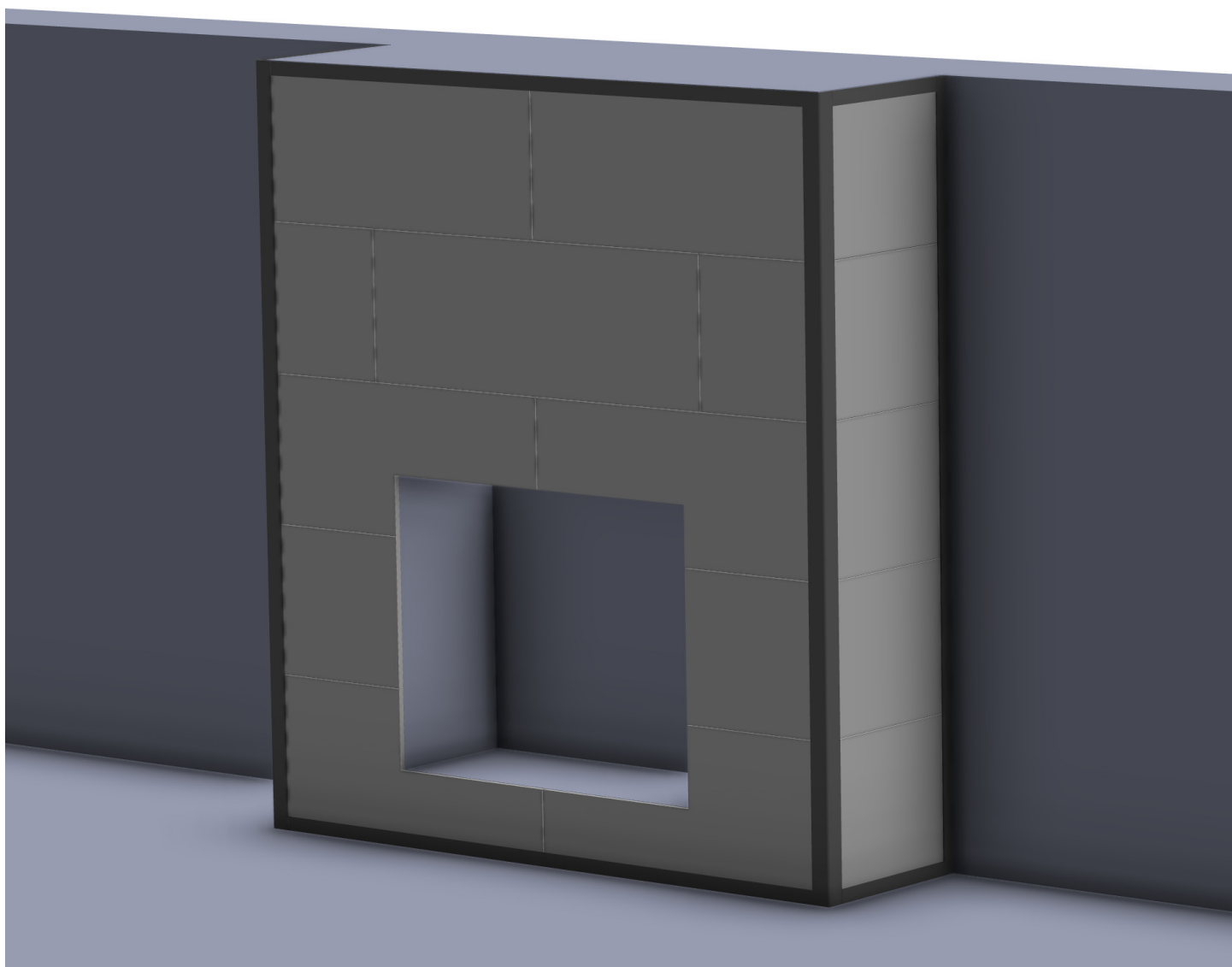
7. If your wall requires trims, add magnets to each panel tab and top/bottom mounting flange around the perimeter of the wall. *(Some wall styles may not require trims)*
8. Attach each appropriate trim around the perimeter of the wall, held in place by the magnets. *(Trims manufactured from Stainless Steel and other nonmagnetic materials may need to be attached with adhesive)*

Note: Be prepared to make modifications to trims when necessary, trims are often sent a few inches longer to be cut to size on the job site. To avoid damage to the finish, add painter's tape to the cut location, and cut using either a circular saw or a cutting disc. Before removing the tape, touch up the end of the trims with black paint or a permanent marker.



Completion

Enjoy your finished product!



Operation & Maintenance

- Excessive heat can cause damage to your product and the finish/powdercoat. A very hot fire, hot coals, embers, ashes, and/or logs coming in contact with the back of the product can cause discoloration or more serious damage. This type of damage, caused by overheating, is considered abuse and is not covered under warranty.
- Your Stoll product can be cleaned using a damp cloth, or mild household cleaner. To avoid damage to the finish, cleaners containing ammonia or other harsh chemicals should be avoided.

Warranty

Your Stoll Products are covered by a 5 year limited warranty. For more information, please visit www.stollindustries.com/resources/. All warranty claims must be placed through your local dealer.



WARNING

This product can expose you to chemicals including Carbon Black, which is known to the state of California to cause Cancer. For more information go to www.P65Warnings.ca.gov